

## Stable Transformation in *Lotus japonicus*

Takema Sasaki, Takuya Suzuki\* and Masayoshi Kawaguchi

Division of Symbiotic Systems, National Institute for Basic Biology, Okazaki, Japan

\*For correspondence: [tsuzaki@nibb.ac.jp](mailto:tsuzaki@nibb.ac.jp)

**[Abstract]** This is a protocol to produce stable transgenic plants in *Lotus japonicus*, which is established based on methods previously reported (Handberg and Stougaard, 1992; Stiller *et al.*, 1997; Thkjaer *et al.*, 1998) with some modifications. In this protocol, hygromycin is used to select transgenic plants.

### Materials and Reagents

1. Germination plate (1% agar in sterilized water)
2. B5 salt (Wako Pure Chemical Industries, catalog number: 399-00621)
3. Gamborg's vitamin solution
4. BAP (Wako Pure Chemical Industries, catalog number: 020-07621)
5. 1-Naphthaleneacetic acid (NAA)
6. Acetosyringone
7. MES
8.  $(\text{NH}_4)_2\text{SO}_4$
9. Phytigel (Sigma-Aldrich, catalog number: P8169)
10. Meropen (Dainippon Sumitomo Pharma)
11. Hygromycin B
12. LB medium (Nacalai Tesque, catalog number: 20066-95)
13. Co-cultivation medium (see Recipes)
14. YMB medium (see Recipes)
15. Callus medium (see Recipes)
16. Shoot elongation medium (see Recipes)
17. Root induction medium (see Recipes)
18. Root elongation medium (see Recipes)

### Equipment

1. Clean bench
2. *L. japonicus* growth facility (we use several types of Biotrons such as LH-410S purchased

- from nippon medical & chemical instruments co., ltd)
3. Surgical knife
  4. Sterilized dish (9 cm in diameter x 2 cm)
  5. Sterilized magenta box
  6. Sterilized filter paper (7 cm in diameter)
  7. Sterilized filter paper (6 x 6 cm)
  8. Vermiculite (Hakugen)

## **Procedure**

### A. Plant growth

1. Sandpaper the surface of *L. japonicus* Gifu or MG-20 seeds, and then incubate them in 2% sodium hypochlorite solution for 5 min. Wash the seeds several times with sterilized water and incubate the seeds overnight in the sterilized water.
2. Surface-sterilized *L. japonicus* Gifu or MG-20 seeds are germinated and grown in the germination plate.
3. Place the plate vertically in a growth cabinet (Gifu; 23 °C 24 h dark for first 3 days, 23 °C 16 h light/8 h dark for next 2 days, MG-20; 23 °C 24 h dark for first 2 days, 23 °C 16 h light/8 h dark for next 2 days). Incubation time in the darkness is depends on ecotypes (hypocotyl growth speed of Gifu is slower than MG-20).

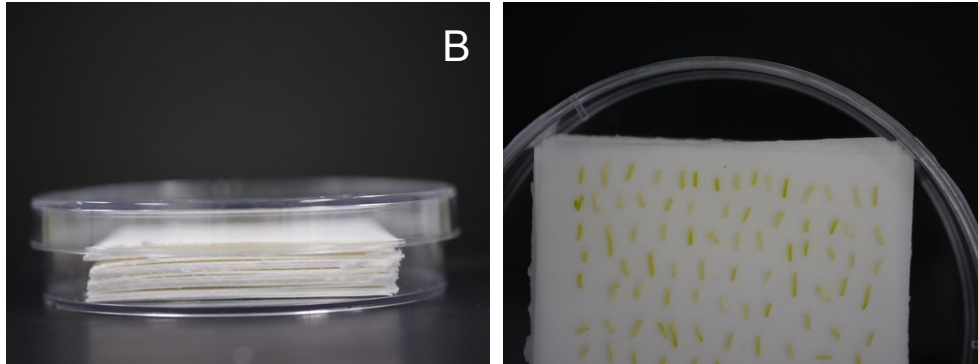
### B. Culture of *Agrobacterium*

Streak *A. tumefaciens* harboring the desired construct on LB plate with appropriate antibiotics for 2 days at 28 °C, then spread bacteria all around sterilized dish (9 cm in diameter) and incubate for 1 day. We use AGL1 as agrobacteria strain.

### C. Infection of *A. tumefaciens* with *L. japonicus*

1. Put about 5 mm piles of sterilized filter papers (6 x 6 cm) in a new dish and pour 20-25 ml co-cultivation medium (Figure 1A). Pouring the medium to the bottom of a dish and then it gradually permeates to the top of piled filter papers. It enables us to recognize the saturation of filter papers with the medium.
2. Collect the bacteria with bacteria spreader from LB plate and suspend 5 ml YMB medium.
3. Put a sterilized filter paper (7-8 cm in diameter) in a new dish and saturate it with bacterial suspension by pipetting.
4. Place the juvenile plants on the filter paper and cut their hypocotyls into about 3 mm length with surgical knife.
5. Transfer the hypocotyl pieces onto the top of piled filter papers saturated with

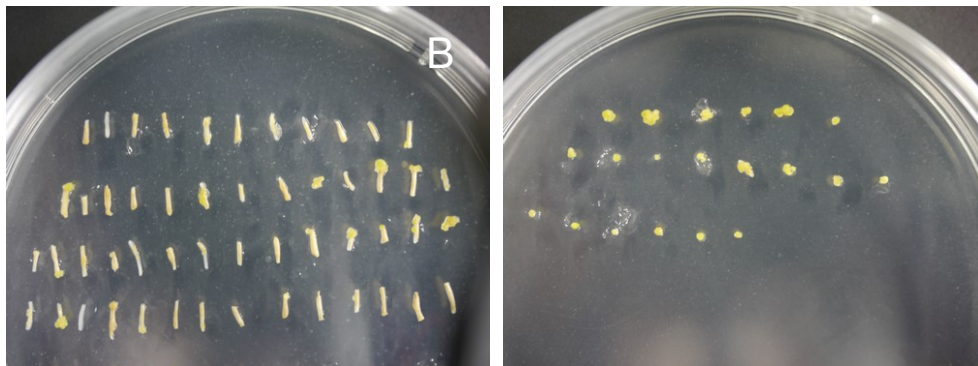
co-cultivation medium and place the plate in a growth cabinet (23 °C 24 h dark) for 6 days (Figure 1B).



**Figure 1. Infection of *A. tumefaciens* with *L. japonicas***

**D. Callus induction**

1. Transfer the hypocotyl pieces from co-cultivation medium onto callus medium (about 1 cm thick) and place the plate in a growth cabinet (23 °C 16 h light/8 h dark) for 2-5 weeks (Figure 2A). Transfer the hypocotyl pieces onto new medium every 5 days.
2. In 2-3 weeks, calluses should start to develop from the tips of hypocotyls. When they become more than 1 mm in size, cut off them from the hypocotyls and transfer them onto new medium (Figure 2B). You can trash white hypocotyls as it is unlikely that calluses develop from them.

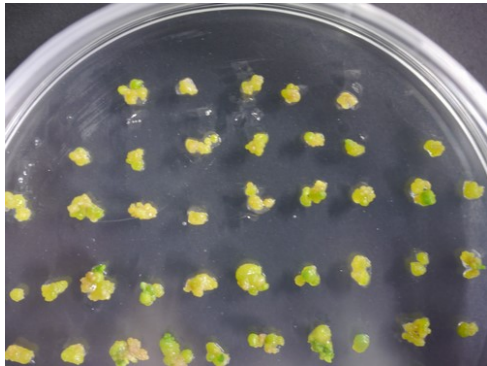


**Figure 2. Callus induction**

**E. Shoot induction**

Transfer the calluses onto callus medium without hygromycin B (about 1 cm thick) and place the plate in a growth cabinet (23 °C 16 h light/8 h dark) for no longer than 7 weeks. Transfer the calluses onto new medium every 5 days (Figure 3). Shoots start to appear in about 3

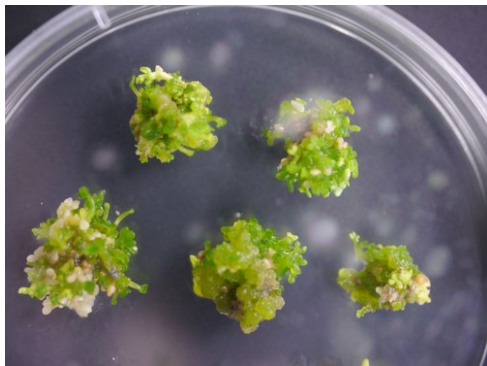
weeks.



**Figure 3. Shoot induction**

F. Shoot elongation

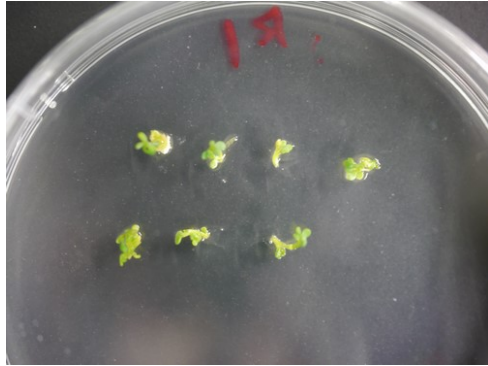
When shoots start to appear, transfer the calluses onto shoot elongation medium (about 1 cm thick) and place the plate in a growth cabinet (23 °C 16 h light/8 h dark) for no longer than 6 weeks. Transfer the calluses onto new medium every 5 days (Figure 4).



**Figure 4. Shoot elongation**

G. Root induction

1. When shoots become about 1 cm in length, cut off the shoots from the calluses and stick them shallowly into root induction medium (about 1 cm thick).
2. Place the plate in a growth cabinet (23 °C 16 h light/8 h dark) for 10 days (Figure 5).



**Figure 5. Root induction**

H. Root elongation

Transfer and stick the shoots into root elongation medium (about 3 cm thick) and place the magenta box in a growth cabinet (23 °C 16 h light/8 h dark) until their root length become about 2-3 cm (Figure 6).



**Figure 6. Root elongation**

I. Naturalization

Transplant the plants into 100% vermiculite and grow them with high humidity at least first 1 week (23 °C 16 h light/8 h dark), and keep growing them for further analysis. To keep high humidity, we cover the pots of plants with Saran wrap.

**Recipes**

1. Co-cultivation medium (pH 5.5)
  - 1/10x B5 salt
  - 1/10x Gamborg's vitamin solution
  - 0.5 µg/ml BAP (Gifu)

- 0.2 µg/ml BAP (MG-20)  
 0.05 µg/ml NAA  
 5 mM MES (pH 5.2)  
 20 µg/ml acetosyringone  
 Prepare 1/10x B5 salt solution and adjust pH, and autoclave it. Add remaining components after autoclave.
2. YMB medium (100 ml)  
 0.2 g mannitol  
 0.04 g yeast extract  
 0.02 g MgSO<sub>4</sub>·7H<sub>2</sub>O  
 0.01 g NaCl  
 Mix all components and autoclave the mixture.  
 Add 1 ml 0.3 M potassium phosphate buffer (pH 6.8) before use.
3. Callus medium (pH 5.5)  
 1x B5 salt  
 1x Gamborg's vitamin solution  
 2% sucrose  
 0.5 µg/ml BAP (Gifu)  
 0.2 µg/ml BAP (MG-20)  
 0.05 µg/ml NAA  
 10 mM (NH<sub>4</sub>)<sub>2</sub>SO<sub>4</sub>  
 0.3% phytigel  
 12.5 µg/ml meropen  
 15-40 µg/ml HygromycinB (You need to find the optimal concentration of HygromycinB because its purity is different among materials)  
 Mix 1xB5 salt and 2% sucrose and adjust pH, and add 0.3% phytigel. Autoclave the mixture. Add remaining components after autoclave.
4. Shoot elongation medium (pH 5.5)  
 1x B5 salt  
 1x Gamborg's vitamin solution  
 2% sucrose  
 0.2 µg/ml BAP  
 0.3% phytigel  
 12.5 µ/ml meropen  
 Mix 1x B5 salt and 2% sucrose and adjust pH, and add 0.3% phytigel. Autoclave the mixture. Add remaining components after autoclave.
5. Root induction medium (pH 5.5)

- 1/2x B5 salt  
 1/2x Gamborg's vitamin solution  
 1% sucrose  
 0.5 µg/ml NAA  
 0.4% phytigel  
 12.5 µg/ml meropen  
 Mix 1/2x B5 salt and 1% sucrose and adjust pH, and add 0.4% phytigel. Autoclave the mixture. Add remaining components after autoclave.
6. Root elongation medium (pH 5.5)  
 1/2x B5 salt  
 1/2x Gamborg's vitamin solution  
 1% sucrose  
 0.4% phytigel  
 12.5 µg/ml meropen  
 Mix 1/2x B5 salt and 1% sucrose and adjust pH, and add 0.4% phytigel. Autoclave the mixture. Add remaining components after autoclave. Magenta boxes are used for this root elongation medium.

### **Acknowledgments**

This work was supported by MEXT/JSPS KAKENHI, Japan (22870035, 23012038, 25114519 to Takuya Suzuki).

### **References**

1. Handberg, K. and Stougaard, J. (1992). [Lotus japonicus, an autogamous, diploid legume species for classical and molecular genetics](#). *Plant J* 2(4): 487-496.
2. Stiller, J., Martirani, L., Tuppal, S., Chian, R.-J., Chiurazzi, M. and Gresshoff, P. M. (1997). [High frequency transformation and regeneration of transgenic plants in the model legume Lotus japonicus](#). *J Exp Bot* 48(7): 1357-1365.
3. Suzuki, T., Yano, K., Ito, M., Umehara, Y., Suganuma, N. and Kawaguchi, M. (2012). [Positive and negative regulation of cortical cell division during root nodule development in Lotus japonicus is accompanied by auxin response](#). *Development* 139(21): 3997-4006.
4. Thykjaer T., Schauser L., Danielsen D., Finneman J., Stougaard J. (1998). Transgenic plants: *Agrobacterium*-mediated transformation of the diploid legume *Lotus japonicus*. In *Cell Biology: A laboratory handbook*. Second edition vol 3. Academic Press.