

An HPLC-based Method to Quantify Coronatine Production by Bacteria

Shweta Panchal^{1, *}, Zachary S. Breitbart^{2, *} and Maeli Melotto^{3, *}

¹Centre for Genome Research, Department of Microbiology and Biotechnology Centre, the Maharaja Sayajirao University of Baroda, Baroda, India; ²Department of Chemistry, University of Texas, Arlington, USA; ³Department of Plant Sciences, University of California, Davis, USA

*For correspondence: shwetapanchal84@gmail.com; zachbreitbart@yahoo.com; melotto@ucdavis.edu

[Abstract] Coronatine is a polyketide phytotoxin produced by several pathovars of the plant pathogenic bacterium *Pseudomonas syringae*. It is one of the most important virulence factors determining the success of bacterial pathogenesis in the plant at both epiphytic and endophytic stages of the disease cycle. This protocol describes an optimized procedure to culture bacterial cells for coronatine production and to quantify the amount of coronatine secreted in the culture medium using an HPLC-based method.

Keywords: Coronatine, HPLC, *Pseudomonas syringae*, Plant pathogen, Virulence factor

[Background] Coronatine (COR), a potent bacterial phytotoxin, is a molecular mimic of the plant hormone jasmonoyl-L isoleucine (JA-Ile). As such, COR activates jasmonic acid (JA) signaling, induces JA-responsive genes, and antagonizes the action of the immune signal salicylic acid. COR consists of two components, coronafacic acid (CFA) and coronamic acid (CMA). The genes that encode for CMA and CFA biosynthesis are not constitutively expressed in the bacterium. Instead, these genes are induced on the plant leaf surface, *in planta* or *in vitro* when the bacterium is grown in inducing medium (Palmer and Bender, 1993; Panchal *et al.* 2016). This article describes a method adapted from Panchal *et al.* (2016) to determine the ability of bacteria to produce coronatine, which can be used as an indication of virulence.

Materials and Reagents

1. 1.5 ml microfuge tubes (VWR, catalog number: 20170-650)
2. Centrifuge tubes, polypropylene, sterile, 50 ml (Corning, Falcon®, catalog number: 352070)
3. Micropipettes (Mettler-Toledo, Rainin, catalog number: KitPR-START)
4. Petri dishes, 100 x 15 mm (VWR, catalog number: 25384-088)
5. Plastic bags
6. Square cuvette, 10 mm path length (Thermo Fisher Scientific, catalog number: 331709)
7. Pasteur pipette (VWR, catalog number: 14673-010)
8. *Pseudomonas syringae* bacterial culture (can be maintained in 25% glycerol at -80 °C)
9. Coronatine (Sigma-Aldrich, catalog number: C8115)
10. Glycerol (VWR, BDH®, catalog number: BDH1172-1LP)

11. Sterile distilled ultrapure water
12. Trifluoroacetic acid (TFA) (Sigma-Aldrich, catalog number: 302031)
13. Acetonitrile (Sigma-Aldrich, catalog number: 34998)
14. Rifampicin
15. 3 N HCl (VWR, BDH[®], catalog number: BDH7375-1)
16. Ethyl acetate (VWR, BDH[®], catalog number: BDH1123-4LG)
17. Sodium hydroxide (NaOH) (Fisher Scientific, catalog number: S318-1)
18. BCA Protein Assay Kit (Thermo Fisher Scientific, Thermo Scientific[™], catalog number: 23225)
19. Tryptone (IBI Scientific, catalog number: 41116105)
20. Yeast extract (U.S. Biotech Sources, BTS, catalog number: Y01PD-500)
21. Sodium chloride (NaCl) (Fisher Scientific, catalog number: S271-500)
22. Bacteriological agar (IBI Scientific, catalog number: IB49171)
23. Ammonium chloride (NH₄Cl) (VWR, catalog number: 470300-196)
24. Magnesium sulfate heptahydrate (MgSO₄·7H₂O) (VWR, catalog number: 97062-134)
25. Potassium phosphate (KH₂PO₄) (VWR, catalog number: 97062-350)
26. Potassium hydrogen phosphate trihydrate (K₂HPO₄·3H₂O) (VWR, catalog number: ALFA33365.A1)
27. Potassium nitrate (KNO₃) (VWR, catalog number: 97065-038)
28. Iron(III) chloride (FeCl₃) (VWR, catalog number: 470301-584)
29. Glucose (VWR, catalog number: 101094-092)
30. Low-sodium Luria Bertani medium (see Recipes)
31. Liquid HSC medium (see Recipes)

Equipment

1. HPLC system: Agilent 1200 HPLC (Agilent Technologies, model: Agilent 1200 HPLC) equipped with quaternary pump, autosampler, thermostated column compartment, and a diode array
2. C8 column, 4.6 x 250 mm, 5 μm (ASTEC, Whippany, NJ, USA or equivalent)
3. Shaker incubator (Eppendorf, model: New Brunswick[™] Innova[®] 42R)
4. Spectrophotometer (Thermo Fisher Scientific, Thermo Scientific, model: Spectronic 20D+)
5. Microcentrifuge (Eppendorf, model: 5418)
6. Water bath (Thermo Fisher Scientific, Thermo Scientific[™], model: Precision GP 2S)
7. Vortex (VWR, catalog number: 945300)
8. Autoclave (VWR, catalog number: 97002-402)
9. Laminar flow hood (ESCO, model: AC1-4E8)
10. Centrifuge (Eppendorf, model: 5810)
11. Synergy water purification system (EMD Millipore, catalog number: SYNS0HFWW)

Software

1. Chromatography data system software (Agilent Technologies, Palo Alto, CA)
2. Microsoft Excel

Procedure

A. Calibration curve

1. Calibration curves must be created using purified COR to determine the exact concentration of COR in biological samples. Prepare five COR solutions with different concentrations (5-50 µg/ml) in 1.5 ml microfuge tubes; so that 5 µl of the solutions represents a range of COR amounts between 25-250 ng. COR is detected by HPLC at 208 nm using a C8 column (4.6 x 250 mm, 5 µm). Isocratic separations are performed using a 0.05% TFA:acetonitrile (60:40 v/v) mobile phase with a flow rate of 1 ml/min. The column temperature is set at 25 °C. Inject 5 µl aliquots of purified COR into the HPLC C8 column. Pure coronatine must produce a peak at 9.4 min.
2. Using the chromatography data system software, integrate the area under the peak for every concentration of COR. Plot a graph of peak area versus ng of coronatine injected as shown in Figure 1. Calculate the linear equation of the trend line obtained using linear regression analysis.

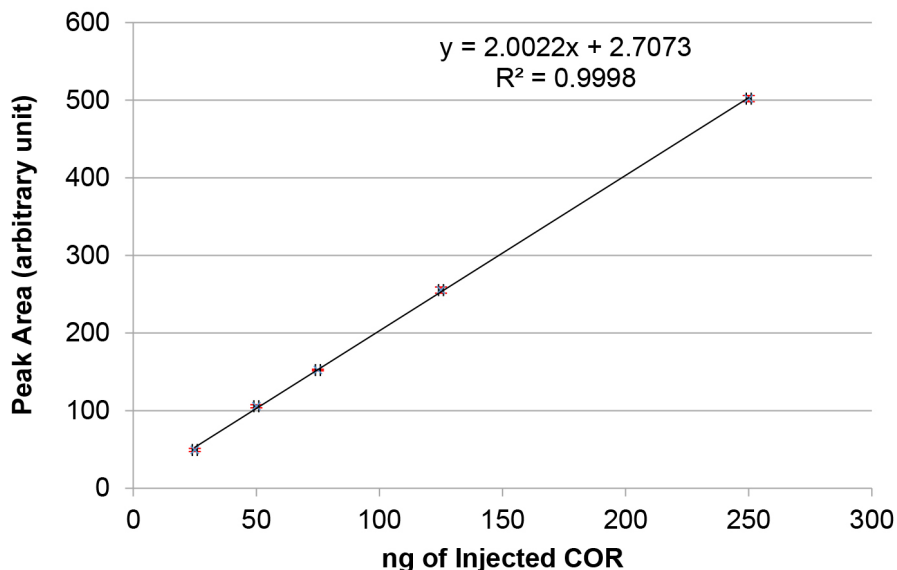


Figure 1. Standard curve for 5-50 µg/ml of coronatine (COR). Purified COR was injected in different concentrations and the peak area (in arbitrary units) for each injection was quantified with the chromatography data system software. Note that the red error bars for each data point are very small and do not clearly appear in the graph.

B. Determining bacterial production of COR

1. From the glycerol stock, streak the bacterial culture on low-salt Luria Bertani (LS-LB) medium supplemented with appropriate antibiotic and incubate the medium plate at 28 °C for approximately 30 h. For example, 100 µg/ml rifampicin is used to culture COR-producing *Pseudomonas syringae* pv. *tomato* DC3000.
2. Inoculate a small part of a single colony (just touch with tip) from this fresh plate into 10 ml of LS-LB medium with appropriate antibiotic in a 50 ml tube and incubate at 28 °C and 200 rpm. Grow until mid to late log phase is reached (OD₆₀₀ of 0.8). It will take approximately 10-12 h. Check optical density (OD) at 600 nm using a spectrophotometer.
3. Centrifuge the bacterial suspension at 2,600 x g for 20 min in 50 ml tube. Remove the supernatant and re-suspend the pellets in 10 ml of sterile water. Vortex thoroughly to wash the cells. Vortex continuously at full speed until the cells are completely re-suspended and there is no visible cell clumps. Repeat this step twice. Finally, re-suspend the total bacterial cells in 40 ml sterile water to obtain a 0.2 OD₆₀₀ inoculum that corresponds to 1 x 10⁸ cells for *Pseudomonas syringae* pv. *tomato*. The calculated approximation of the OD₆₀₀ is sufficient.
4. Transfer 1 ml from this culture to 10 ml of HSC medium in a 50 ml tube and incubate for 24 h at 18 °C and 200 rpm. More volume of culture can be used if greater concentrations of COR are required. However, 1 ml is adequate for COR detection. From 10 ml of bacterial culture, one can obtain a concentration of COR in the range of 0.5-2 µg/mg of total protein.
5. After 24 h, transfer 0.6 ml of culture to microfuge tubes. Spin at a maximum speed (or 16,000 x g) at room temperature in a microcentrifuge for 3 min to pellet cells.
6. Transfer 0.5 ml of supernatant to fresh microfuge tubes and store pelleted cells at -80 °C. These cells are used to estimate total protein content as described in step B14 below.
7. To the supernatant, add 25 µl of 3 N HCl and 0.5 ml ethyl acetate to each tube. Vortex the tubes briefly for 30 sec at maximum speed. Allow phases to separate. The phases should separate out within two minutes.
8. Transfer 0.4 ml of the ethyl acetate phase (upper layer) to a fresh microfuge tube.
9. Repeat steps B7-B8 twice (Figure 2).

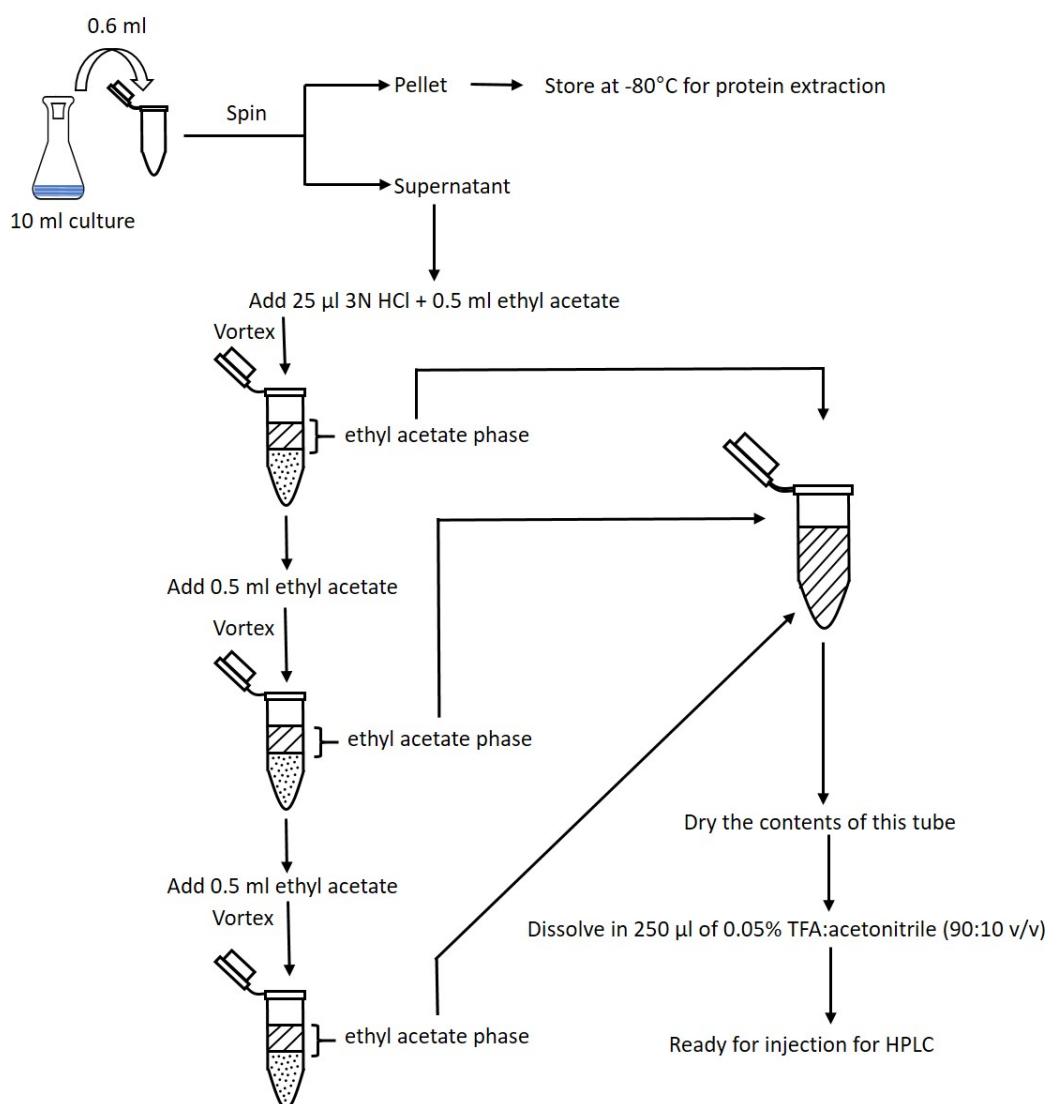


Figure 2. Flowchart of the COR extraction. Steps for extracting COR from bacterial culture supernatant using ethyl acetate. The three ethyl acetate phases are combined in a single tube and let dry. Dried COR is dissolved in TFA:acetonitrile and this solution is now ready for injection into HPLC.

10. Dry contents of tubes under a stream of compressed air. One method is to float tubes in a 55 °C water bath, using a Pasteur pipette to gently blow air into each tube (see Figure 3 for a representative setup). Alternatively, tubes may be left open on the bench at room temperature overnight.

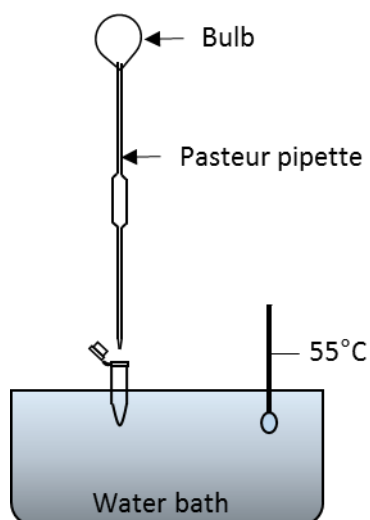


Figure 3. Set up for drying the contents of microfuge tubes in a water bath. After COR is extracted from bacterial culture with ethyl acetate, the ethyl acetate is evaporated by floating the tube on water bath set at 55 °C and blowing air using Pasteur pipette. Alternatively, the tubes can be left open to dry overnight.

11. For HPLC analysis, add 250 μ l of 0.05% TFA:acetonitrile (90:10 v/v) to each dry tube. Vortex each tube for 15 sec. Samples are now ready for direct injection into the HPLC system.
12. Determine the presence of COR by HPLC using a C8 column (4.6 x 250 mm, 5 μ m) with detection at 208 nm. Isocratic separations are performed using a 0.05% TFA:acetonitrile (60:40 v/v) mobile phase with a flow rate of 1 ml/min. The injection volume is 5 μ l and the column temperature is set at 25 °C.
13. Inject the unknown sample into the HPLC system. If a peak is observed at 9.4 min, determine the area under the peak. Using the peak area, apply the standard curve and linear equation to determine the ng of coronatine injected in 5 μ l. Then, calculate μ g/ml coronatine for the sample.
14. The amount of COR produced can be expressed as a function of protein concentration. The cells obtained in step B6 are lysed by suspending the pellet in 1 ml of 1 N NaOH followed by boiling and freezing three times. The total protein content in bacterial cell lysates is determined with the Pierce BCA Protein Assay Kit according to manufacturer's instructions. Express COR concentration as μ g/mg protein as shown by Panchal *et al.*, (2016).

Data analysis

1. The COR-producing bacterium *P. syringae* pv. *tomato* strain DC3000 and its derivative COR-defective mutant strains DC3118 or DB29 must be used as a positive and negative controls for this assay, respectively.
2. At least three technical replicates and three biological replicates should be used for quantification of COR. Statistical analysis should be done by calculating the average and

standard error of COR production across replicates. Significance of the difference between two samples can be obtained by performing a Student's *t*-test. These analyses and linear regression can be done with Microsoft Excel or other comparable statistical analysis software.

Notes

1. Always use bacterial pathogen isolates that have been freshly streaked from glycerol stock. Multiple sub-culturing of isolates may lead to loss of virulence and COR production. Ideally, the bacterium pathogen is isolated from the plant host every two years.
2. At least 24 h of incubation in HSC medium is required for consistent production of COR.

Recipes

1. Low-sodium Luria Bertani medium
 - 10 g/L tryptone
 - 5 g/L yeast extract
 - 5 g/L NaCl
 - 2.5% agar
 - Adjust pH to 7.0 with NaOH
 - Autoclave medium at 15 psi, 120 °C for 15 min. Allow the medium to cool down to about 55 °C and add appropriate antibiotic as needed. Pour medium into plates in a laminar flow hood. Store plates in plastic bags at 4 °C to avoid medium dehydration
2. Liquid HSC medium
 - Part A:
 - 1.0 g NH₄Cl
 - 0.2 g MgSO₄·7H₂O
 - 4.1 g KH₂PO₄
 - 3.6 g K₂HPO₄·3H₂O
 - 0.3 g KNO₃
 - 10 ml 2 mM FeCl₃
 - 890 ml ddH₂O
 - Adjust pH to 6.8
 - Autoclave at 10 psi, 120 °C for 20 min
 - Part B:
 - 20 g glucose
 - 100 ml ddH₂O
 - Filter-sterilize the solution
 - Store parts A and B separately at 4 °C. Mix part A and part B (9:1 ratio) right before use

Acknowledgments

We thank Dr. Carol Bender for useful advice on the coronatine extraction method. This study was supported by a grant from the US National Institute of Allergy and Infectious Disease (5R01AI068718) to Dr. Maeli Melotto.

References

1. Palmer, D. A. and Bender, C. L. (1993). [Effects of environmental and nutritional factors on production of the polyketide phytotoxin coronatine by *Pseudomonas syringae* pv. *glycinea*](#). *Appl Environ Microbiol* 59(5): 1619-1626.
2. Panchal, S., Roy, D., Chitrakar, R., Price, L., Breitbach, Z. S., Armstrong, D. W. and Melotto, M. (2016). [Coronatine facilitates *Pseudomonas syringae* infection of *Arabidopsis* leaves at night](#). *Front Plant Sci* 7: 880.