

## Isolation and 3-dimensional Culture of Primary Murine Intestinal Epithelial Cells

Agnieszka Pastuła\* and Michael Quante

II. Medizinische Klinik, Klinikum rechts der Isar, Technische Universität München, Munich, Germany

\*For correspondence: [agnieszka.pastula@tum.de](mailto:agnieszka.pastula@tum.de)

**[Abstract]** The intestine, together with skin and blood, belongs to the organs with the highest cell turnover, which makes it a perfect model to study cellular processes, such as proliferation and differentiation. Epithelial cell turnover in intestine is possible due to the presence of intestinal stem cells, which are located at the bottom of the crypt. Here, we recapitulate a detailed protocol for the isolation and culture procedures of primary epithelial intestinal cells in a three - dimensional (3D) *in vitro* system, described for the first time by Hans Clevers group (Sato *et al.*, 2009). This specific 3D culture preserves intestinal stem cells, which give rise to differentiated progeny for example goblet cells. The culture has many applications and represents a useful model to study stem cell biology, epithelial cell regeneration, and transplantation studies. Moreover, the presented 3D culture can be used to investigate the barrier function of intestinal epithelial cells, as well as heterotypic cell interactions between epithelial cells and stromal cells.

### Materials and Reagents

1. Mouse (4 weeks-16 weeks old)
2. Advanced DMEM/F12 (Life Technologies, Gibco<sup>®</sup>, catalog number: 12634-010)
3. Heat Inactivated Fetal Bovine Serum (FBS) (Life Technologies, Gibco<sup>®</sup>, catalog number: 10500-064)
4. PBS without Ca<sup>2+</sup> and Mg<sup>2+</sup> (Life Technologies, Gibco<sup>®</sup>, catalog number: 14190-094)
5. Penicillin/ Streptomycin (10,000 Units/ ml Penicillin; 10,000 µg/ml Streptomycin) (Life Technologies, Gibco<sup>®</sup>, catalog number: 15140-22)
6. 70% ethanol
7. 100x GlutaMAXTM-I (Life Technologies, Gibco<sup>®</sup>, catalog number: 35050-038)
8. 1 M HEPES (Life Technologies, Gibco<sup>®</sup>, catalog number: 15630-080)
9. 50x B-27 Supplement (Life Technologies, Gibco<sup>®</sup>, catalog number: 17504-044)
10. 100x N-2 Supplement (Life Technologies, Gibco<sup>®</sup>, catalog number: 17502-048)
11. BD Matrigel Basement Membrane Matrix (10 ml) (BD Biosciences, catalog number: 354234)
12. Gentamicin Reagent Solution (50 mg/ml) (Life Technologies, catalog number: 15750-060)

13. Sterile 0.1% BSA (in PBS)
14. Sterile 2 mM EDTA (see Recipes)
15. Washing solution (see Recipes)
16. N-Acetyl-L-cysteine (Sigma-Aldrich, catalog number: A9165-5G) (see Recipes)
17. Recombinant Murine EGF (Pepro Tech, catalog number: AF-315-09) (see Recipes)
18. Recombinant Murine Noggin (Pepro Tech, catalog number: 250-38) (see Recipes)
19. Recombinant Human R-Spondin-1 (Pepro Tech, catalog number: 120-38) (see Recipes)

### **Equipment**

1. Forceps and short, sharp-point scissors (e.g. Hardened Fine Iris Scissors, Fine Science Tools, catalog number: 14090-09)
2. 70  $\mu$ m cell strainer (BD Biosciences, Falcon<sup>®</sup>, catalog number: 352350)
3. Centrifuge 5702R (Eppendorf)
4. Cover glass
5. Microscope
6. 24-well tissue culture plate (Sarstedt AG, catalog number: 83.1836)
7. Petri dishes
8. Falcon tubes (50 ml, 15 ml)
9. Pipettes (20 ml, 10 ml, 1 ml, 100  $\mu$ l)
10. Pipetboy
11. 37 °C, 5% CO<sub>2</sub> cell culture incubator

### **Procedure**

#### Part I. Isolation

Before starting: Put matrigel on ice in order to thaw it.

*Note: For the matrigel handling, please follow the manufacturer's instructions.*

#### A. Harvesting

1. The small intestine is harvested from a mouse.
2. The intestine is placed in a Petri dish containing ice-cold washing solution and then fat and the adjacent tissue are removed.

*Note: Both tissue and Washing solution should be stored on ice during the whole procedure.*

3. The intestine is opened lengthwise and washed out from the luminal contents using washing solution.
4. The villi of an intestine are scraped off using a cover glass.

*Note: From this step the procedure should be continued under sterile conditions. To be on a safe side it is recommended to perform scraping on both sides of an intestine. Detached villi are seen as cloudy solution.*

5. The intestine is washed with washing solution and then cut with sharp-point scissors into 2-4 mm pieces.
6. The material is transferred into a 50 ml falcon tube containing 10-20 ml of washing solution.

*Note: Tissue fragments might stick to the pipette. To avoid this, pre-wetting of the pipette is recommended.*

7. The material is pipetted up and down a few times with a 10 ml pipette.
8. After sedimentation of tissue fragments, the supernatant is removed.

#### B. Washing

1. For the washing, 10-20 ml of washing solution is added. Then, tissue fragments are sedimented. After that, the supernatant is removed.
2. Step B1 is being repeated until the supernatant is clear (approximately 10 times).
3. 25 ml of 2 mM EDTA is added to the tissue fragments.
4. The falcon tube that contains tissue fragments and EDTA is placed on a shaker and incubated for 15 min at 4 °C.
5. Tissue fragments are sedimented followed by the removal of the supernatant.
6. 10-20 ml of washing solution is added. Then, tissue fragments are sedimented. After that, the supernatant is removed.
7. The Washing solution is added to the tissue fragments, pipetted up and down 3-5 times and passed through a 70 µm cell strainer.
8. The flow-through (I fraction) is stored on ice and will be further proceeded in step C3 of Elution.

*Note: Crypts are present in the supernatant and go through the pores of the cell strainer, whereas the tissue fragments stay on the top of the cell strainer.*

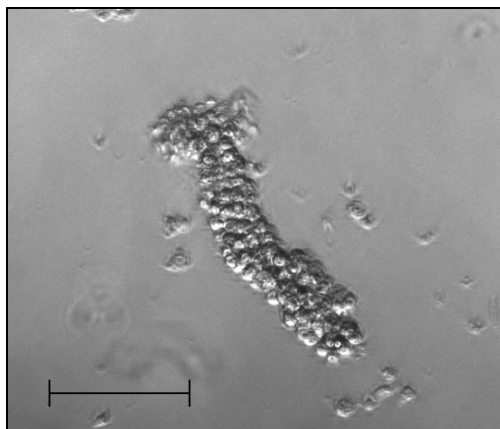
9. Tissue fragments that remained on the cell strainer are proceeded further.
10. On a pipette tip the tissue fragments are transferred into a 50 ml falcon tube containing 25 ml of 2 mM EDTA.
11. The falcon tube is placed on a shaker and incubated for 30 min at 4 °C.

#### C. Elution

1. After tissue sedimentation, the supernatant is discarded.
2. Washing solution is added to the tissue fragments, gently pipetted up and down 3-5 times and passed through a 70 µm cell strainer (II fraction).

*Note: This step is repeated; as a result fraction III will be collected (optional). Tissue fragments might stick to the pipette. To avoid that, pre-wetting of the pipette is recommended.*

3. Crypts from certain fractions are observed under the microscope. Presence of finger-like structures (= crypts, see Figure 1) indicates a successful isolation.



**Figure 1. A representative of a freshly isolated crypt.** Objective 10x, scale bar 100  $\mu$ m

4. Crypts are spin down at 600 rpm for 5 min at 4 °C to remove single cells. A 24-well plate is pre-warmed by placing it into the cell culture incubator.
5. After centrifugation the supernatant is discarded.
 

*Note: If the pellet is not visible, the centrifugation should be repeated.*
6. The pellet is resuspended in 10 ml of ice-cold Basal Medium 2 (BM2; see Table 1). Crypts are counted under the microscope.

**Table 1. Composition of BM2 (50 ml)**

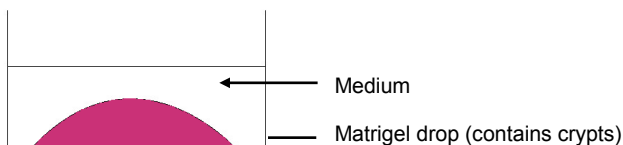
Component	Volume
B27 (50x)	1 ml
N2 (100x)	0.5 ml
N-Acetyl-L-cysteine (500 mM)	125 $\mu$ l
BM1 (see Table 2)	To final volume of 50 ml

Stored at 4 °C or -20 °C (avoid repeated freeze thaw cycles)

7. The crypts are centrifuged at 800 rpm for 5 min at 4 °C.
8. Crypt pellet is resuspended in matrigel:
  - a. Use 100-500 crypts per 50  $\mu$ l of matrigel
  - b. Pipette gently, avoid bubbles

9. 50  $\mu$ l of matrigel is pipetted per well into the pre-warmed 24-well plate and then the plate is left for 2-3 min at room temperature.

*Note: Pipette matrigel exactly in the middle of the well, so that as a result matrigel drop is formed (see Figure 2).*

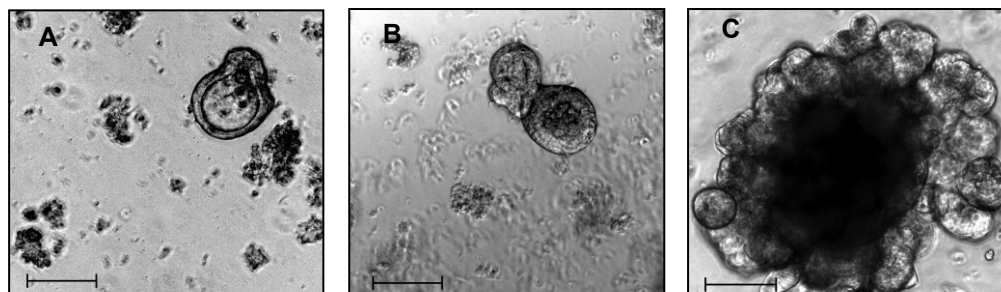


**Figure 2. Scheme of the organoid culture**

10. The plate is transferred into the cell culture incubator and incubated at 37 °C for 5-10 min (until the matrigel solidifies completely).
11. 0.5 ml of crypt culture medium (CCM; see Table 3) is added per well.
12. The plate is transferred back to the cell culture incubator.

## Part II. Culture

2-3 times per week the medium is removed and 0,5 ml/well of fresh medium (CCM, see Table 3) is added. When organoids are big (see Figure 3C), they should be passed. Usually the passage is performed once a week. Organoids should be splitted in 1:4 ratio.



**Figure 3. Isolated small intestinal crypts in 3D culture.** A, B, C - 48 h/ 5 days/ 12 days in culture, respectively. A and B, passage 0. C, passage 1. Phase contrast, objective 10x, scale bars 100  $\mu$ m

Passage procedure:

1. Medium is removed.
2. 0.5 ml of ice-cold Basal medium 1 (see Table 1) well is added.
3. Plate is incubated on ice for at least 5 min.

*Note: Starting from this step organoids will be kept on ice for the whole time.*

4. Organoids are pipetted up and down several times (1 ml pipette is used).
5. All organoids are transferred into one ice-cold 15 ml falcon tube and fill up with Basal Medium 1 (BM1; see Table 2) to final volume of 15 ml.

**Table 2. Composition of BM1 (500 ml)**

Component	Volume
Advanced DMEM/F12	485 ml
100x GlutaMax	5 ml
100x Pen/Strep	5 ml
Hepes (1 M)	5 ml

Stored at 4 °C

6. Organoids are centrifuged for 600 rpm for 5 min at 4 °C. During centrifugation a 24-well plate is pre-warmed at 37 °C.
7. The supernatant is carefully removed.
 

*Note: Remove as much supernatant as possible. Be careful not to remove organoids.*
8. 10 ml of ice-cold BM1 is added to the organoid pellet.
9. The organoids are centrifuged for 800 rpm for 5 min at 4 °C.
10. The supernatant is carefully removed.
 

*Note: During this step nice pellet should be visible and the supernatant should be removed completely.*
11. The organoids are mixed with matrigel and pipetted up and down.
 

*Note: Avoid bubbles during pipetting. Use 4x volume of matrigel used for the first time.*
12. 50 µl matrigel/well is pipetted into the pre-warmed 24-well plate.
 

*Note: Pipette matrigel exactly in the middle of the well, so that as a result matrigel drop is formed.*
13. The plate is left for 2-3 min at room temperature.

**Table 3. Composition of CCM (20 ml)**

Component	Volume
BM2	20 ml
EGF (50 ng/µl)	10 µl
Noggin (100 ng/µl)	20 µl
R-Spondin-1 (1 ug/µl)	10 µl

Stored short-term at 4 °C or -20 °C (avoid repeated freeze thaw cycles)

14. The plate is transferred into the cell culture incubator and incubated at 37 °C for 5-10 min

(until the matrigel solidifies completely).

15. 0.5 ml of CCM (see Table 3) is added per well.

The plate is transferred back to the cell culture incubator.

### **Notes**

1. The percentage of viable crypts in the culture is approximately 90-95%. Crypt viability *in vitro* strictly depends on the quality of the growth factors used for preparation of the culture medium. Moreover, medium should be either freshly prepared (and stored at 4 °C up to 5 days) or single-use aliquots should be made and stored at -20 °C for one month.
2. Viable and healthy organoid culture is characterized by the presence of buds and increase in organoid size over the time. Just after the passage, organoids are small, but then they grow again into structures as seen in the Figure 3C. Crypt culture contains intestinal stem cells, which represent a multipotent stem cell population, as they have potential to differentiate only into intestinal epithelial cells. There are certain types of intestinal epithelial cells and they can be identified by stainings: stem cells (e.g. Lgr5 staining), Goblet cells (e.g. periodic acid-Schiff staining), Paneth cells (e.g. lysozyme staining), enterocytes (e.g. intestinal alkaline phosphatase staining), enteroendocrine cells (e.g. chromogranin A staining) (Sato *et al.*, 2009). Some other possible stainings are:  $\beta$ -catenin (active Wnt signaling) and Ki-67 (proliferation marker).

### **Recipes**

1. 2 mM EDTA  
500 ml PBS  
2.5 ml 0.5 M EDTA (pH 8) in distilled water (sterile filtered)  
Stored at 4 °C
2. Washing solution  
50 ml FBS  
450 ml PBS  
5 ml gentamicin, stock 50 mg/ml (optional)  
Stored at 4 °C
3. 500 mM N-Acetyl-L-cysteine  
Dissolve 407.5 mg of N-Acetyl-L-cysteine in 5 ml of distilled water  
Sterile filter  
Make aliquots  
Stored at 4 °C

#### 4. EGF, Noggin, R-Spondin-1

Prepare stock solutions (EGF 50 ng/μl; Noggin 100 ng/μl; R-Spondin 1 μg/μl) according to the manufacturer's instructions

Example:

Noggin 100 ng/μl

Add 1 ml of 0.1% BSA (in PBS) into a vial with 100 μg Noggin

Mix by pipetting

Make aliquots

Stored at -20 °C

### **Acknowledgments**

This protocol was adapted from Sato *et al.* (2009).

### **References**

1. Sato, T., Vries, R. G., Snippert, H. J., van de Wetering, M., Barker, N., Stange, D. E., van Es, J. H., Abo, A., Kujala, P., Peters, P. J. and Clevers, H. (2009). [Single Lgr5 stem cells build crypt-villus structures \*in vitro\* without a mesenchymal niche](#). *Nature* 459(7244): 262-265.