

Immunostaining Protocol: P-Smad2 (Xenograft and Mice)

Alexandre Calon¹, Elisa Espinet¹, Sergio Palomo-Ponce¹, Daniele V. F. Tauriello¹, Mar Iglesias²,
María Virtudes Céspedes³, Marta Sevillano³, Cristina Nadal⁴, Peter Jung⁴, Xiang H.-F. Zhang⁵,
Daniel Byrom⁶, Antoni Riera⁶, David Rossell⁷, Ramón Mangués⁷, Joan Massagué⁷, Elena
Sancho^{7*} and Eduard Batlle^{7*}

¹Oncology Programme, Institute for Research in Biomedicine, Barcelona, Spain; ²Department of Pathology, Hospital Universitari del Mar, Barcelona, Spain; ³IIB Sant Pau, Hospital de la Santa Creu i Sant Pau, Barcelona, Spain; ⁴Institut de Malalties Hemato-Oncològiques, Hospital Clínic, Barcelona, Spain; ⁵Cancer Biology and Genetics Program, Memorial Sloan-Kettering Cancer Center, New York, USA; ⁶Chemistry and Molecular Pharmacology Programme, Institute for Research in Biomedicine, Barcelona, Spain; ⁷Biostatistics and Bioinformatics Unit, Institute for Research in Biomedicine, Barcelona, Spain

*For correspondence: elena.sancho@irbbarcelona.org; eduard.batlle@irbbarcelona.org

[Abstract] Metastasis depends on a gene program expressed by the tumor microenvironment upon TGF-beta stimulation. CRC (Colorectal cancer) cell lines did not induce robust stromal TGF-beta responses when injected into nude mice as shown by lack of p-SMAD2 accumulation in tumor-associated stromal cells. To enforce high TGF-beta signaling in xenografts, we engineered CRC cell lines to secrete active TGF-beta. Subcutaneous tumors obtained from HT29-M6TGF- β , KM12L4aTGF- β cells and SW48TGF- β cells contained abundant p-SMAD2⁺ stromal cells.

Materials and Reagents

1. Paraffin sections (subcutaneous tumors samples or liver metastasis from nude mice respectively injected subcutaneously or intrasplenic with CRC cells)
2. XILOL
Note: Xylol also referred to as xylene or dimethylbenzene is a solvent used in histology as a clearing agent to remove paraffin from dried microscope slides prior to staining.
3. MilliQ H₂O
4. Wash buffer (Dako, catalog number: K800721)
5. Rabbit anti-P-Smad2 (Cell Signaling Technology, catalog number: 3108)
6. BrightVision poly-HRP anti- Rabbit (Immunologic, catalog number: DPVR-110HRP)
7. Envision FLEX antibody diluent (Dako, catalog number: K8006)
8. Peroxidase Blocking Solution (Dako, catalog number: S202386)
9. ImmPACT DAB (Vector Laboratories, catalog number: SK-4105)

10. DPX mounting media (Sigma-Aldrich, catalog number: 06522)
11. Hematoxylin
12. Citrate buffer (pH 6) (see Recipes)

Equipment

1. Oven
2. Immunostaining apparatus
3. Autoclave

Procedure

1. Stove samples at 65 °C just before starting the immunostaining technique. Remove the samples from the oven when the wax present in sections is completely undone.
2. De-waxing and rehydration: Place slides in a rack to perform following washes (bath).
 - a. XILOL: 10 min
 - b. XILOL: 10 min
 - c. XILOL: 5 min
 - d. 100% EtOH: 10 min
 - e. 100% EtOH: 5 min
 - f. 96% EtOH: 5 min
 - g. 90% EtOH: 10-15 times
 - h. 80% EtOH: 10-15 times
 - i. 70% EtOH: 10-15 times
 - j. 50% EtOH: 10-15 times
 - k. 25% EtOH: 10-15 times
 - l. H₂O MilliQ: 10-15 times
3. Antigen retrieval.
 - a. Citrate Buffer (pH 6)
 - b. Time: 20 min autoclave (121 °C)
4. 3 washes 5 min with 1 ml 1x wash buffer.
5. Blocking endogenous peroxidase.
 - a. 200 ml Peroxidase Blocking Solution
 - b. Time: 10 min
6. 3 washes 5 min with 1ml 1x wash buffer.
7. Incubation with primary antibody.
 - a. Antibody: Rabbit anti-P-Smad2

- b. Dilution 1/200 in Envision FLEX antibody diluent
- c. 200 μ l/sample
- d. O/N 4 °C
8. 3 washes 5 min with 1 ml 1x wash buffer.
9. Incubation with antibody BrightVision.
 - a. Antibody: BrightVision anti-Rabbit
 - b. 150 μ l/sample
 - c. Time: 45 min at room temperature
10. 3 washes 5 min with 1 ml 1x wash buffer.
11. Revealed with ImmPACT DAB.
 - a. 200 μ l/sample
 - b. Time: 10 min
12. 3 washes 5 min with distilled water.
13. Hematoxilin (1 ml) counterstaining, time: 2 min.
14. Rinse in distilled water bath.
15. Rinse in TAP water bath.
16. Dehydration and mounting with DPX.

Representative data

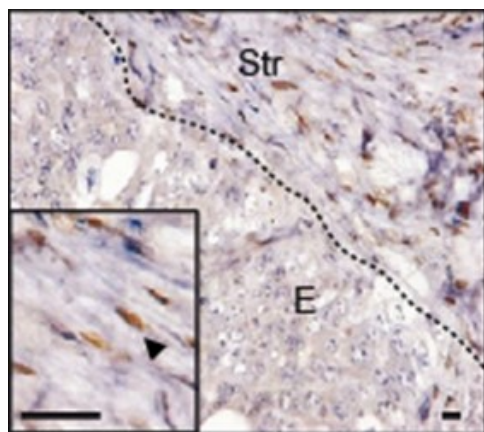


Figure 1. p-SMAD2 staining (arrowhead) in liver metastasis generated after intrasplenic injection of CRC cells. E: epithelial cells, Str: stromal cells. Scale bars = 10 μ m.

Recipes

1. Citrate buffer (pH 6)
Citrate 5.8 g sodium citrate

Set pH 6 with citric acid
2 L MilliQ

Acknowledgments

A.C. and D.V.F.T hold a Juan de la Cierva postdoctoral fellowship, E.E. an FPI PhD fellowship (both from Spanish Ministry of Science and Innovation). This work has been supported by grants from Instituto de Salud Carlos III FEDER (RD09/0076/00036) and the "Xarxa de Bancs de tumors sponsored by Pla Director d'Oncologia de Catalunya (XBTC), to E.B. from the European Research Council (Starting grant - 208488) and Consolider programmes (MICINN), to E.S. and A.C. by the Spanish Ministry of Science and Innovation, to JM by NIH grant CA34610 and to RM by grants PS09/00965 (MICINN) and NanoCoMets (CIBERBBN).

References

1. Calon, A., Espinet, E., Palomo-Ponce, S., Tauriello, D. V., Iglesias, M., Cespedes, M. V., Sevillano, M., Nadal, C., Jung, P., Zhang, X. H., Byrom, D., Riera, A., Rossell, D., Mangués, R., Massagué, J., Sancho, E. and Batlle, E. (2012). [Dependency of colorectal cancer on a TGF-beta-driven program in stromal cells for metastasis initiation](#). *Cancer Cell* 22(5): 571-584.